

Instalações

- Paredes

- Isolamento térmico
- Higienização

- Piso

- Material
- Caimento
- Canaletas

- Telhado

- Isolamento térmico

- Materiais

- Inox (Ferro não)

- Iluminação

- Passarelas

- Higiene

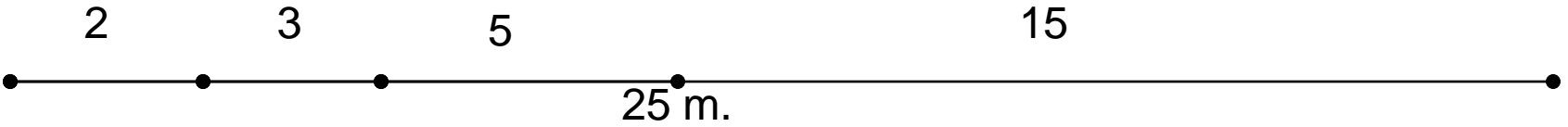
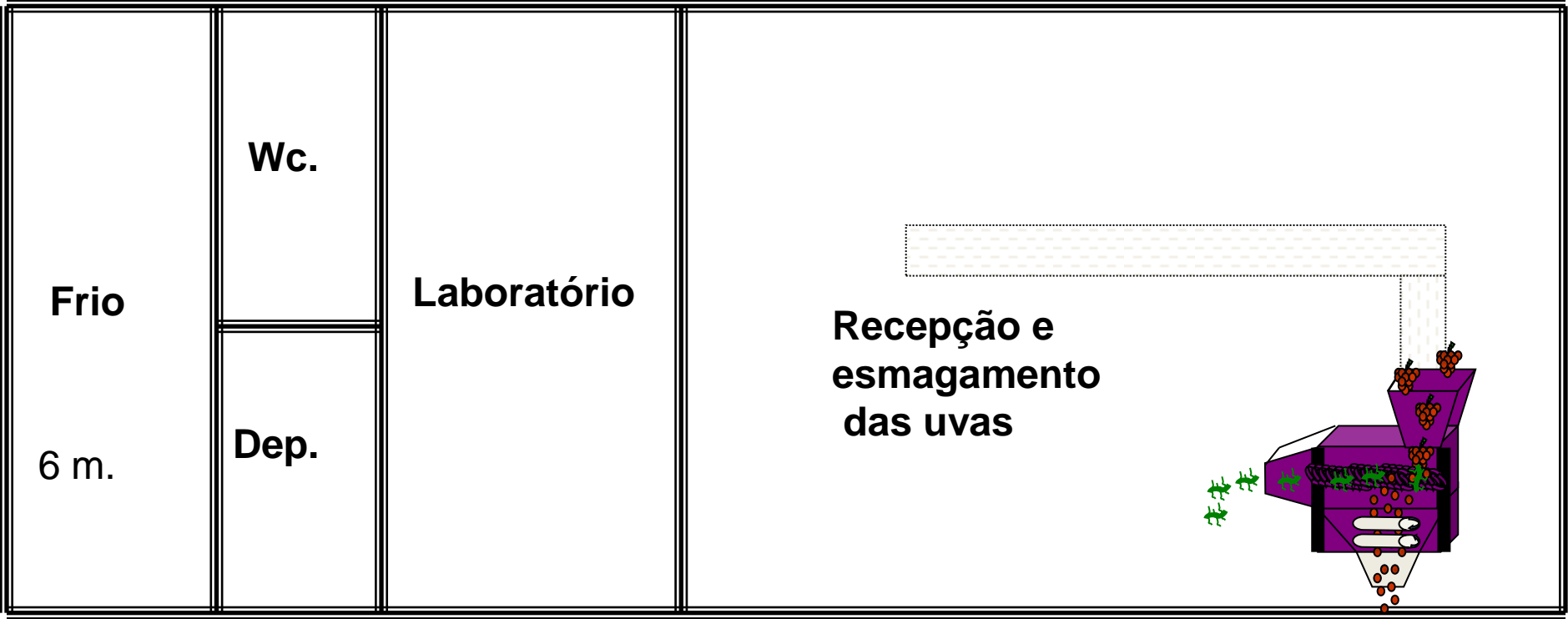
- Estética

- O entorno

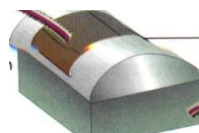
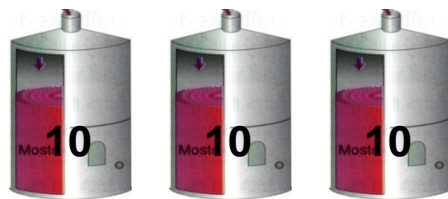
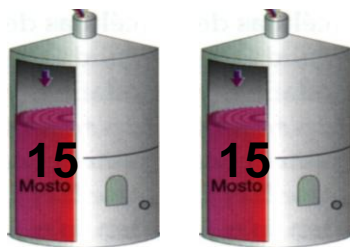


Planejamento

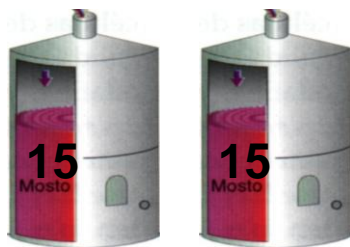
- Quantidade
- Número de variedades
- Rendimento diário
- Quantidade de tanques
- Equipamentos
- Tipo de terreno
 - declividade



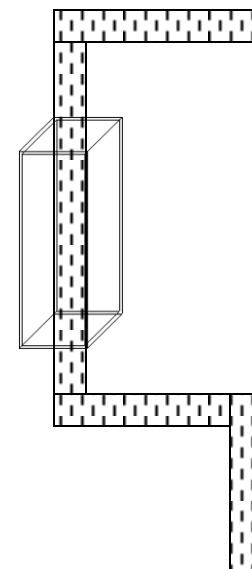
9 m.



Fermentação e Estocagem



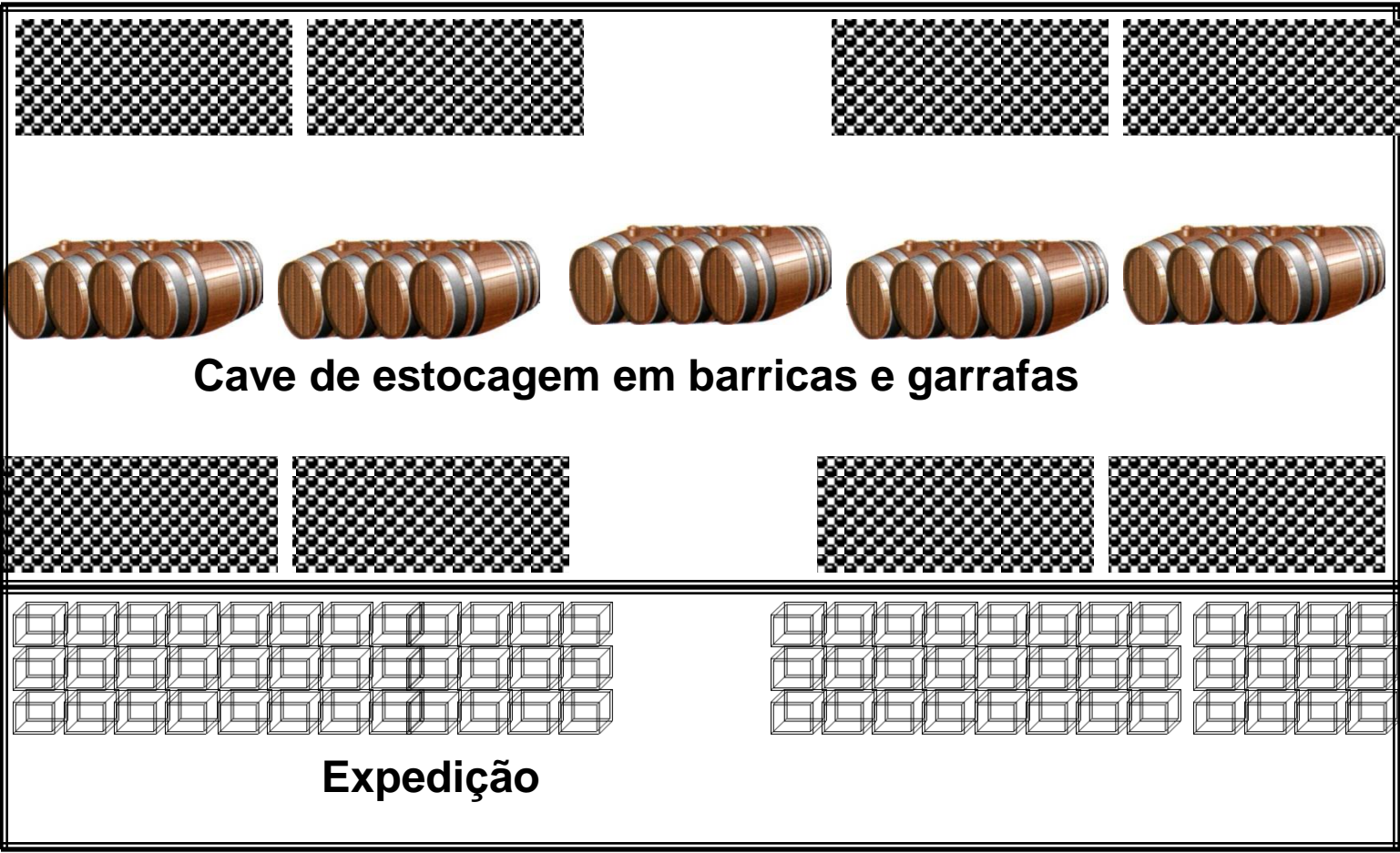
Engarrafamento



20 m.

5 m.

6 m.



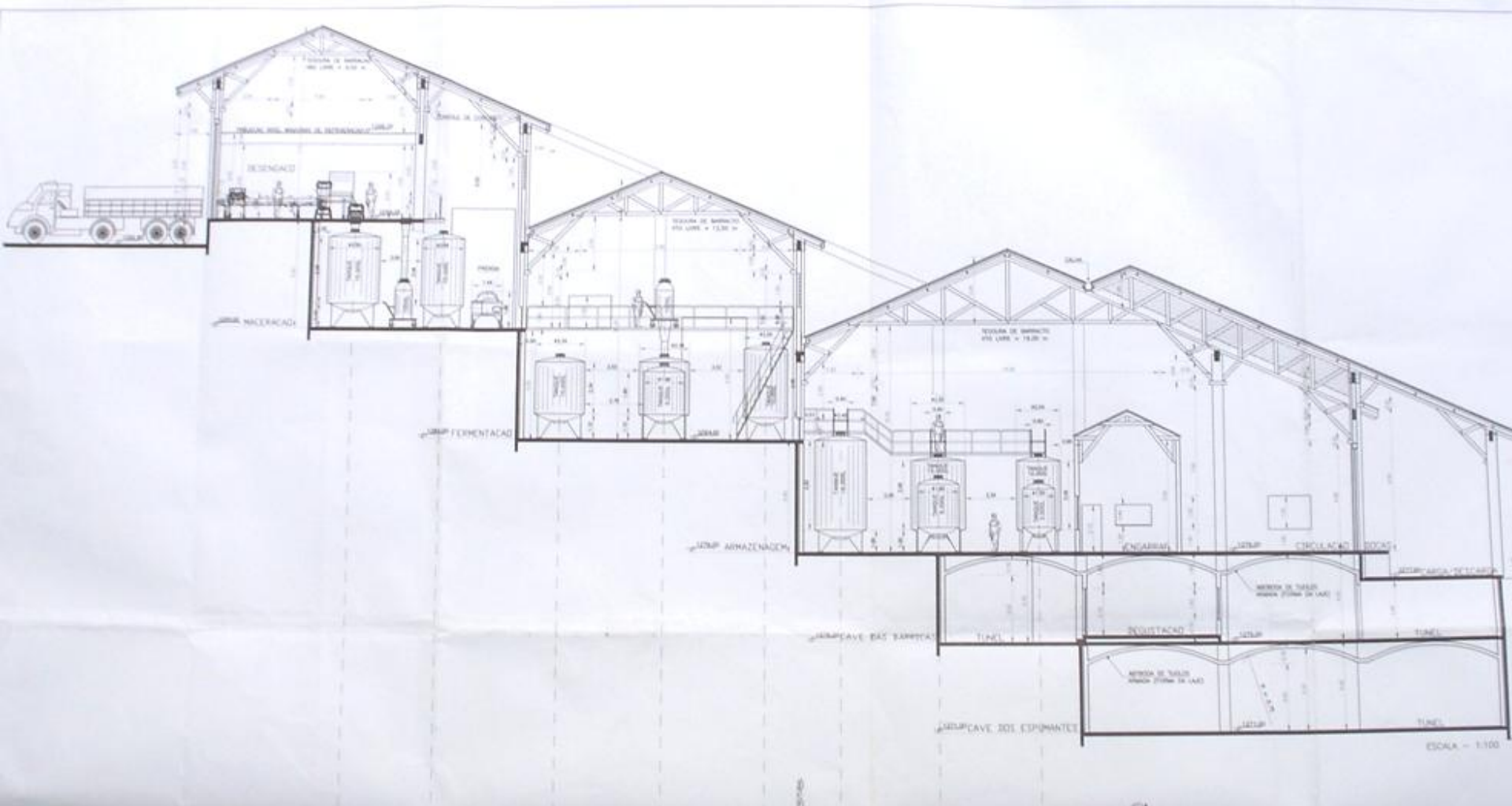
Cave de estocagem em barricas e garrafas

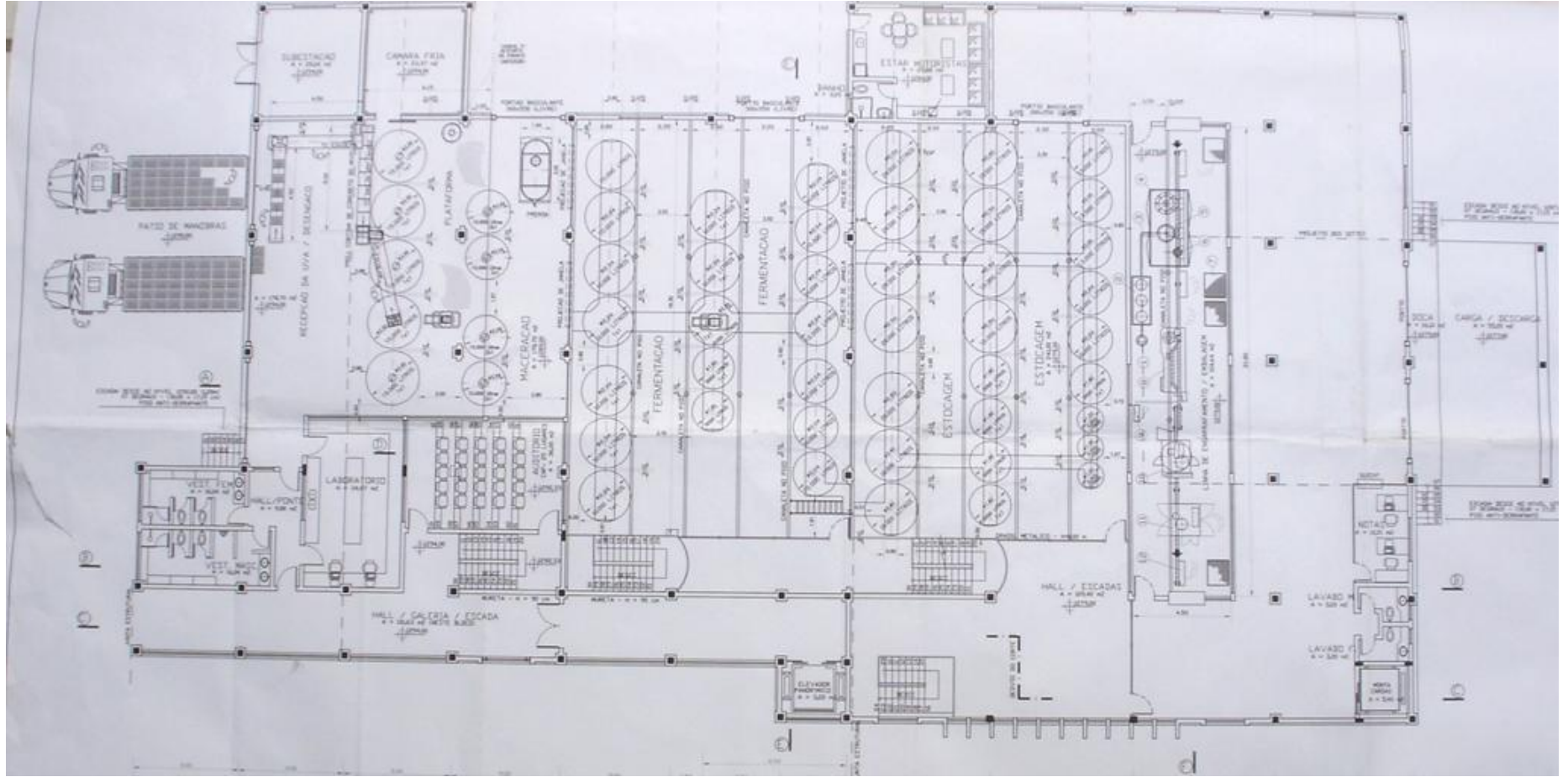
5 m.

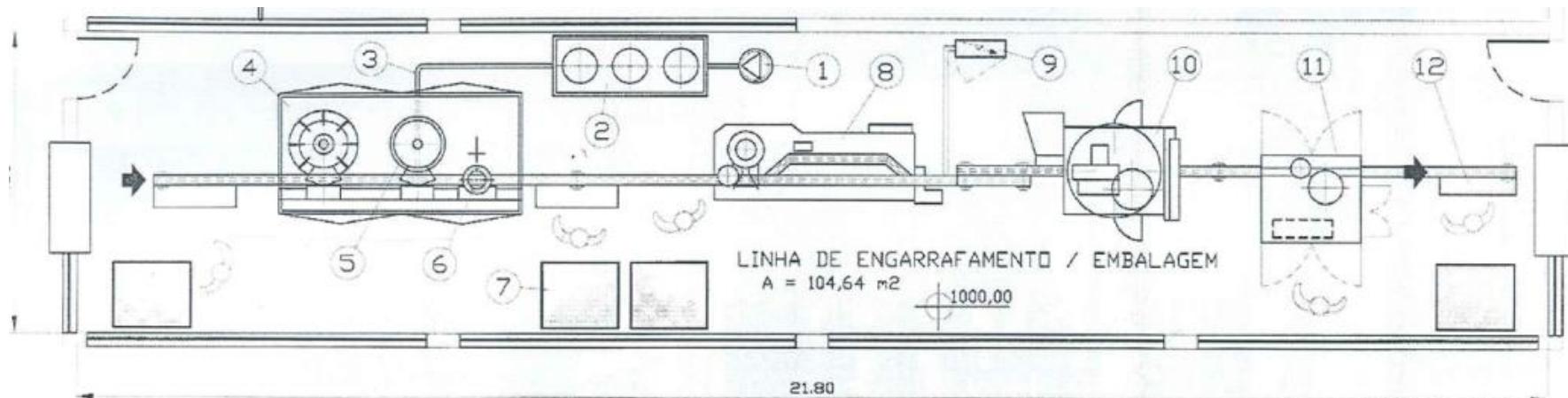
Expedição

25 m.



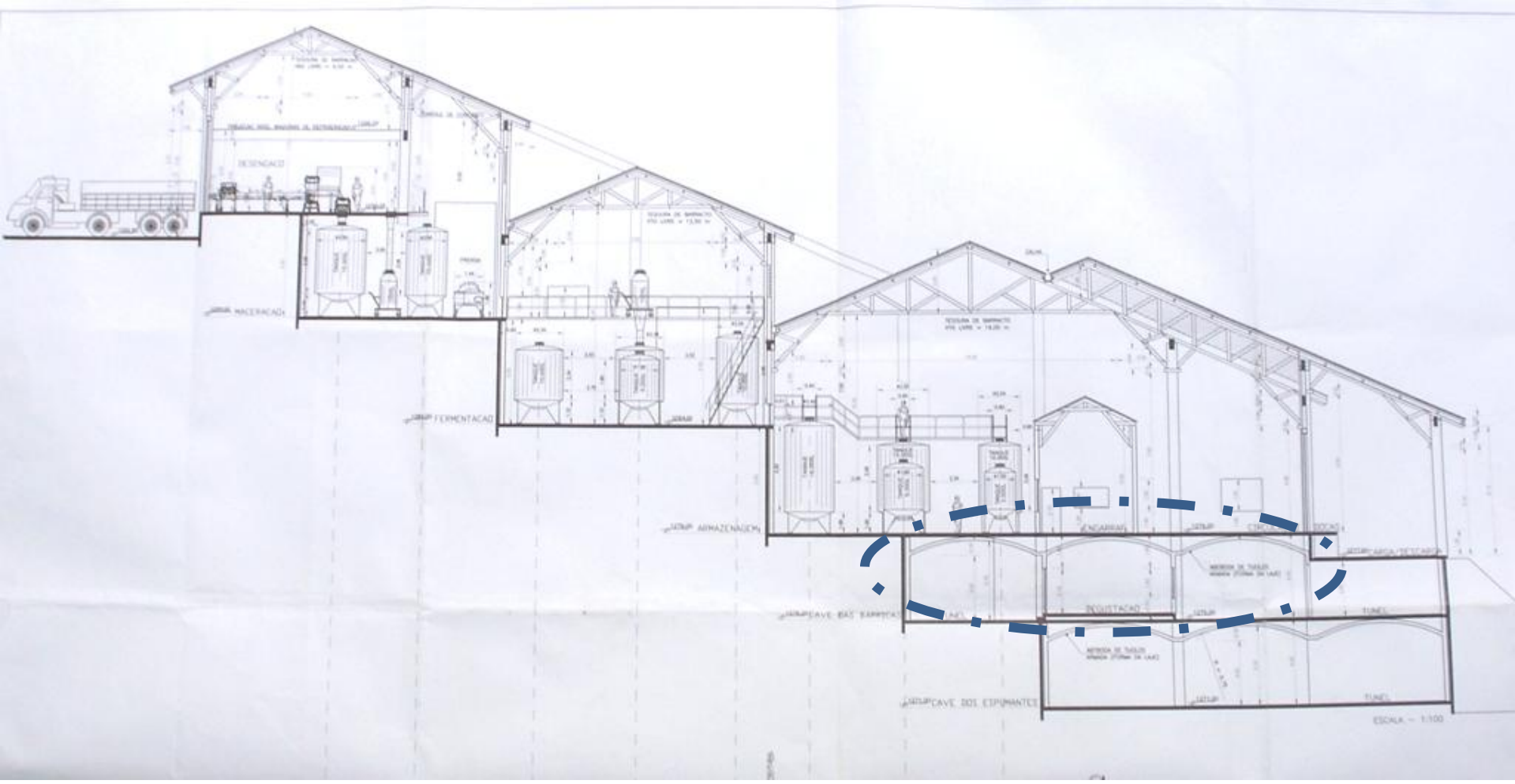


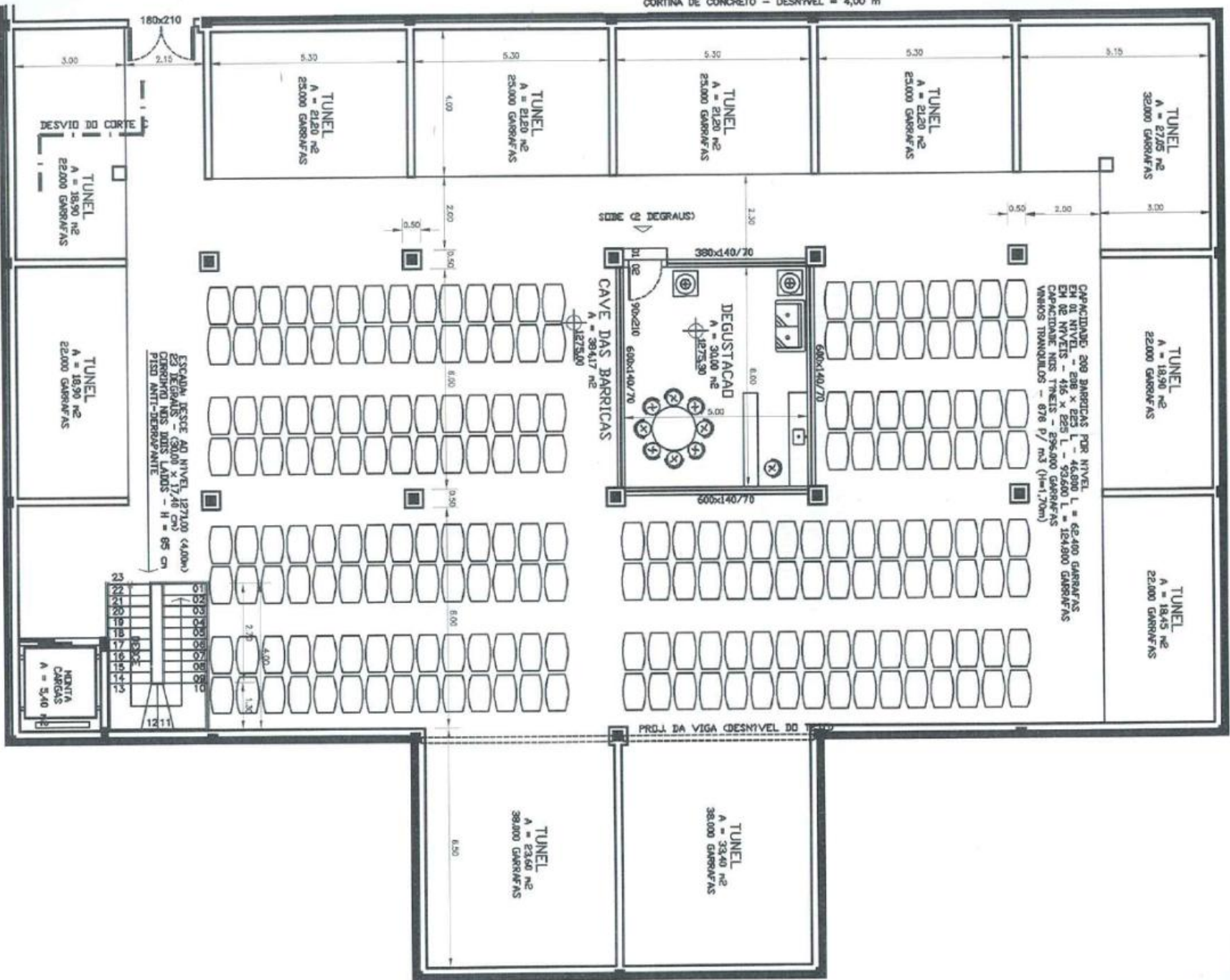




LINHA DE ENGARRAFAMENTO

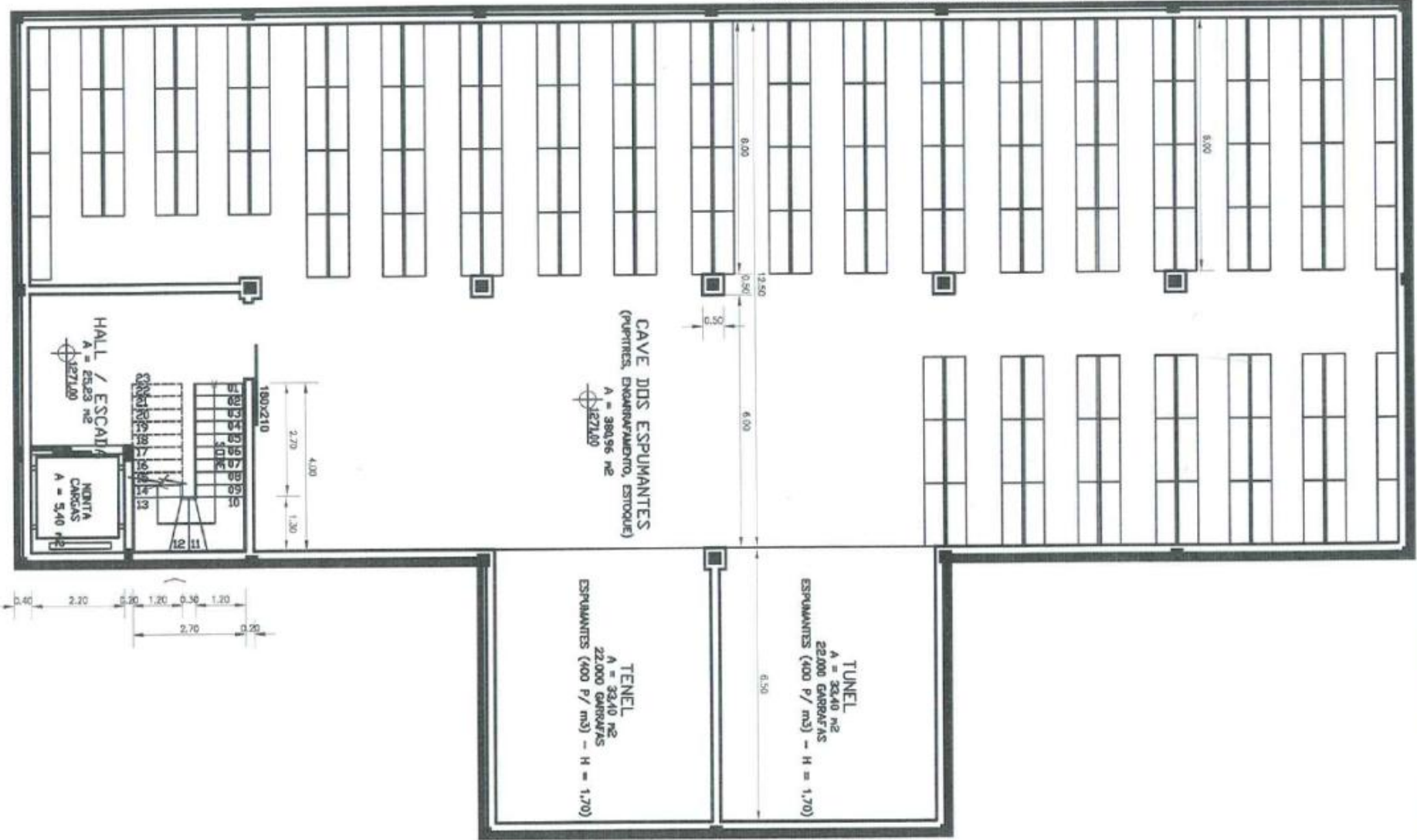
- 1- BOMBA VOLUMÉTRICA
- 2- MICROFILTRAÇÃO
- 3- TUBULAÇÃO
- 4- MÁQUINA DE LAVAR
- 5- MÁQUINA DE ENCHIMENTO
- 6- ROLHADOR
- 7- PALETS DE GARRAFAS
- 8- MÁQUINA DE LAVAR GARRAFAS EXTERNO
- 9- PAINEL ELÉTRICO
- 10- CAPSULADORA
- 11- ETIQUETADORA
- 12- ESTEIRA DE EMBALAGEM
- 13- TRECHO DE TRANSPORTE







CORTINA DE CONCRETO - DESNIVEL = 4,00 m



CAVE DOS ESPUMANTES
 (PUMITEIS, ENXARRAMADONTO, ESTOQUE)
 A = 380,96 m²
 Ø 271,00

TUNEL
 A = 32,40 m²
 22.000 GARRAFAS
 ESPUMANTES (400 P/ m³) - H = 1,70)

TUNEL
 A = 32,40 m²
 22.000 GARRAFAS
 ESPUMANTES (400 P/ m³) - H = 1,70)

HALL / ESCADA
 A = 25,23 m²
 Ø 271,00

INDIA
 CARGAS
 A = 5,40 m²



8,00

8,00

12,50

6,00

6,50

1,30

1,20

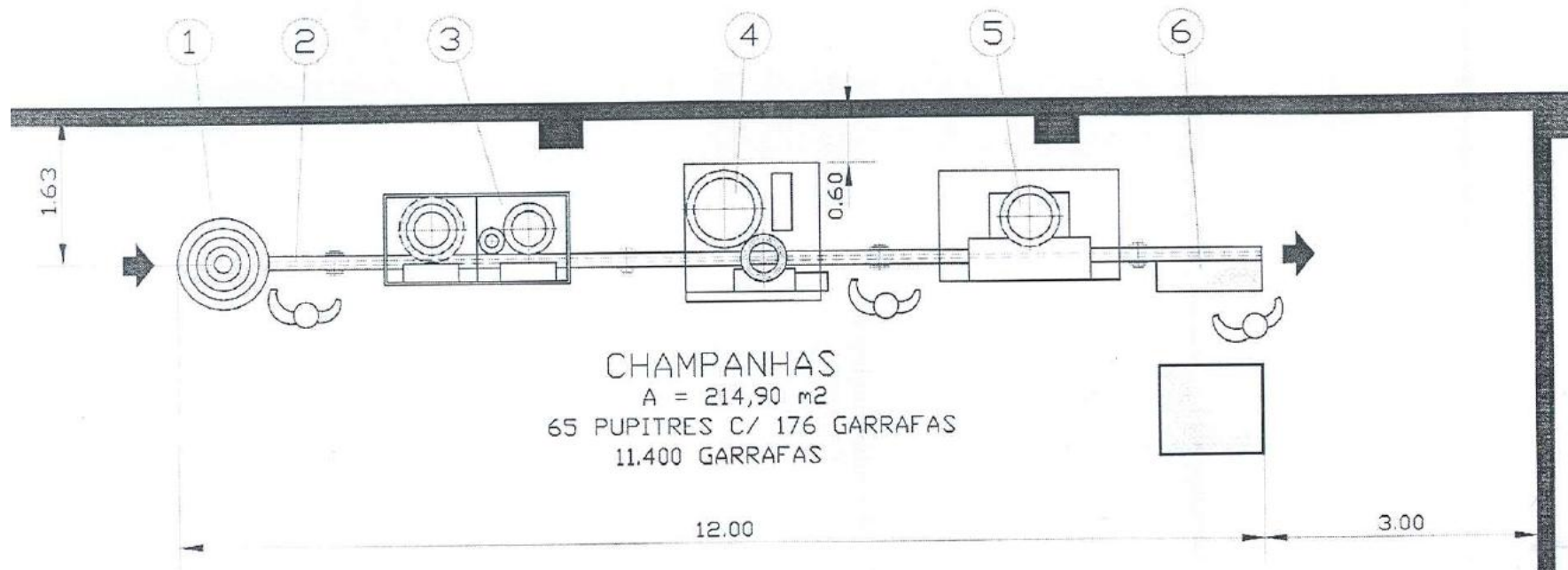
0,30

1,20

0,50

2,70

0,20



LINHA DE CHAMPAGNOISE

- 1- CONGELADOR DE GARGALO
- 2- TRECHO DE TRANSPORTE
- 3- DEGORGIADOR
- 4- NIVELADOR DE LÍQUIDO
- 5- ROLHADOR
- 6- GABIETADORA
- 7- MESA

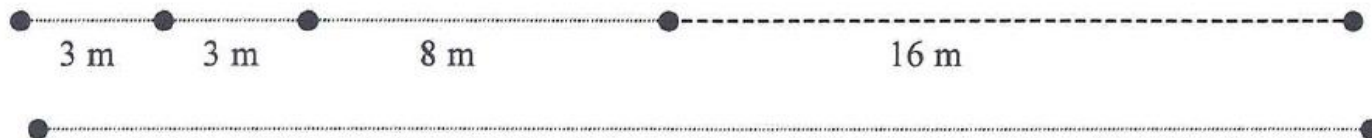
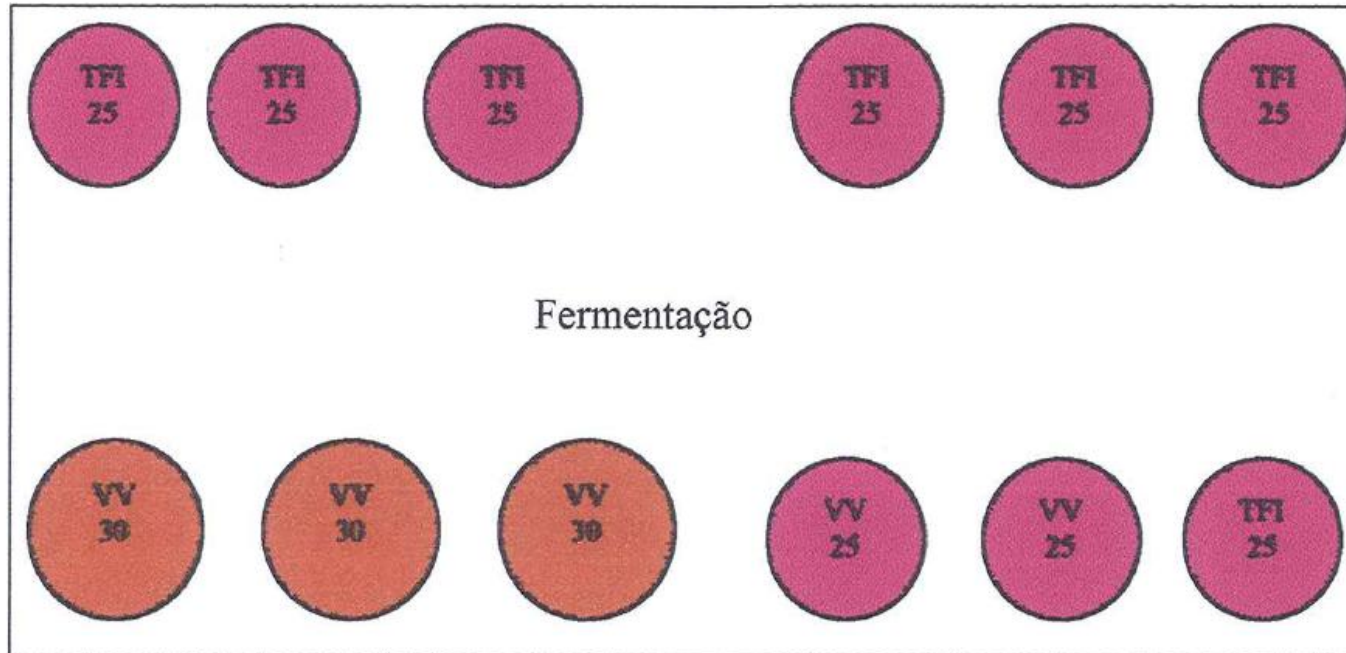
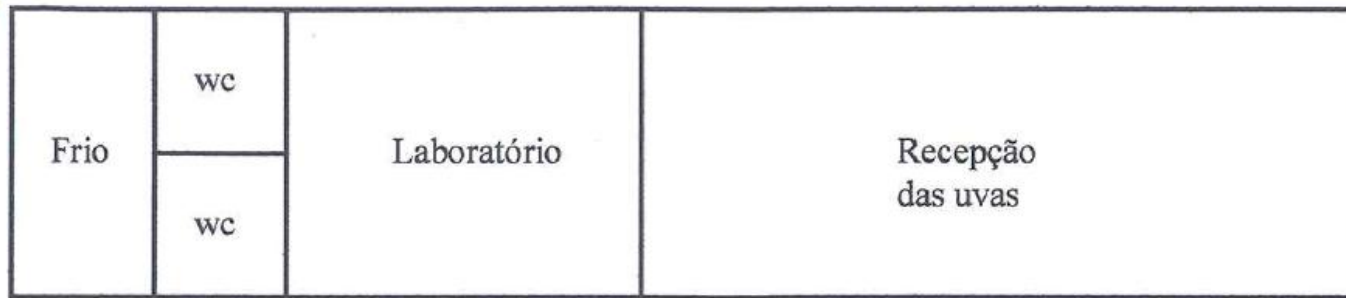




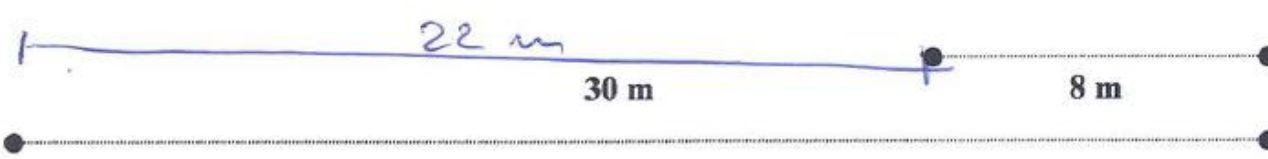
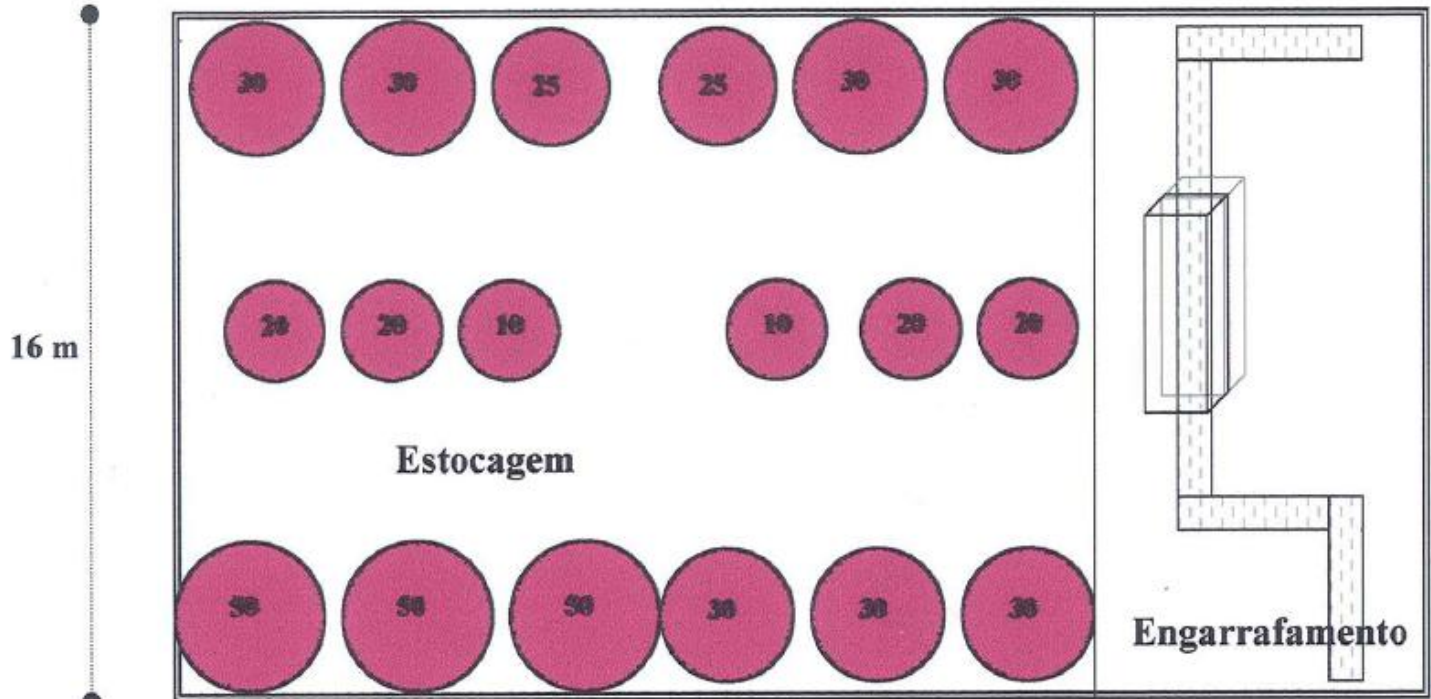
FACHADA NORTE
escala 1:75

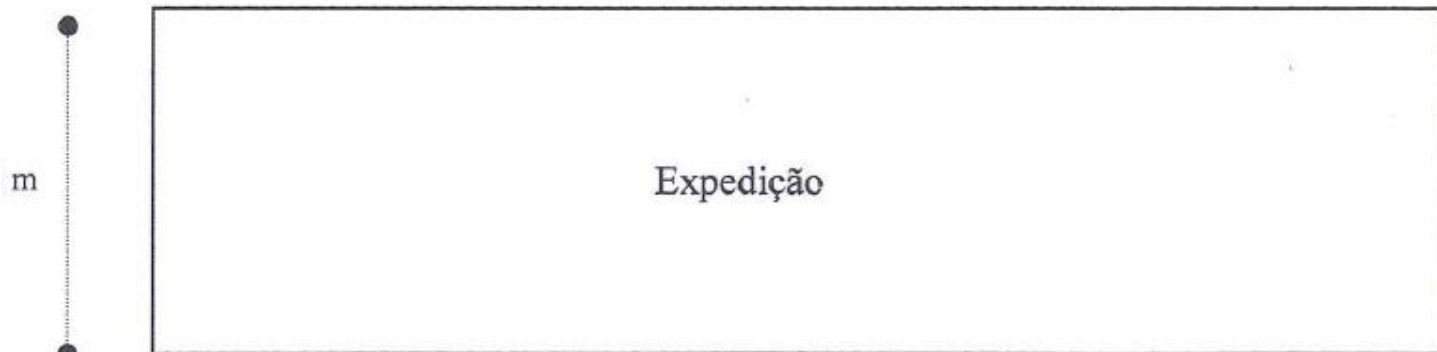
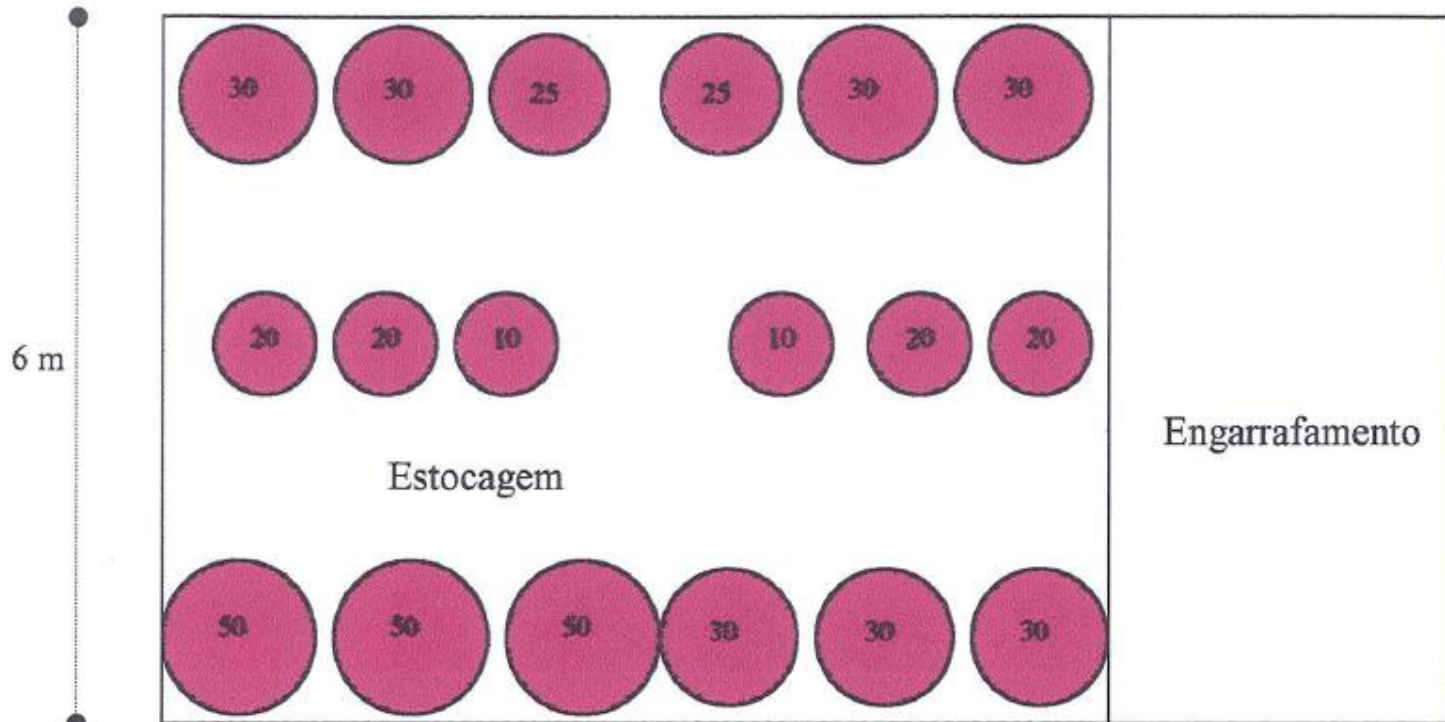


FACHADA OESTE
escala 1.75



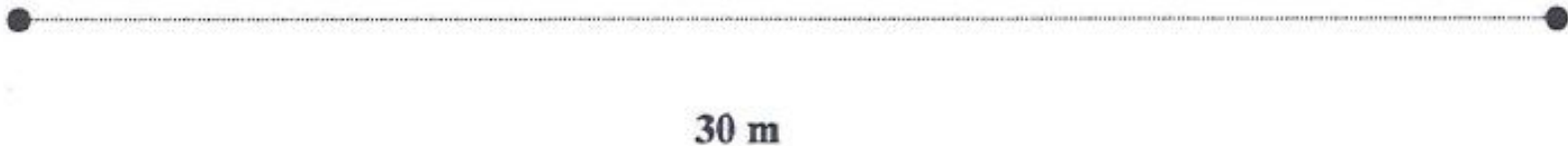
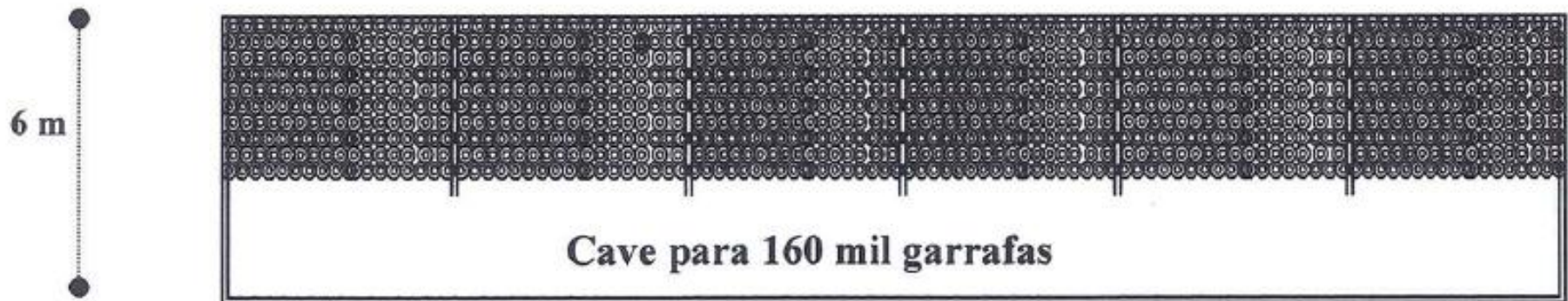
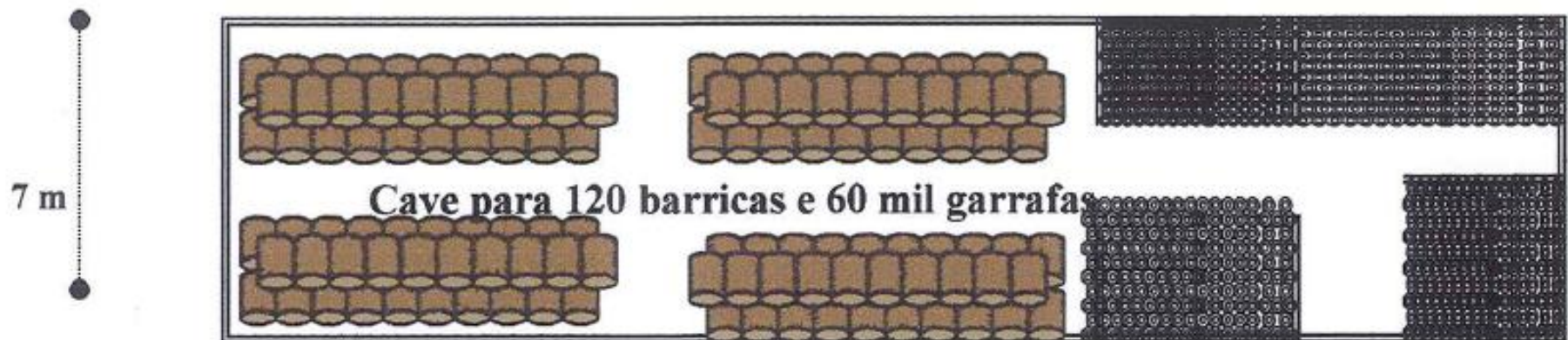
30 m

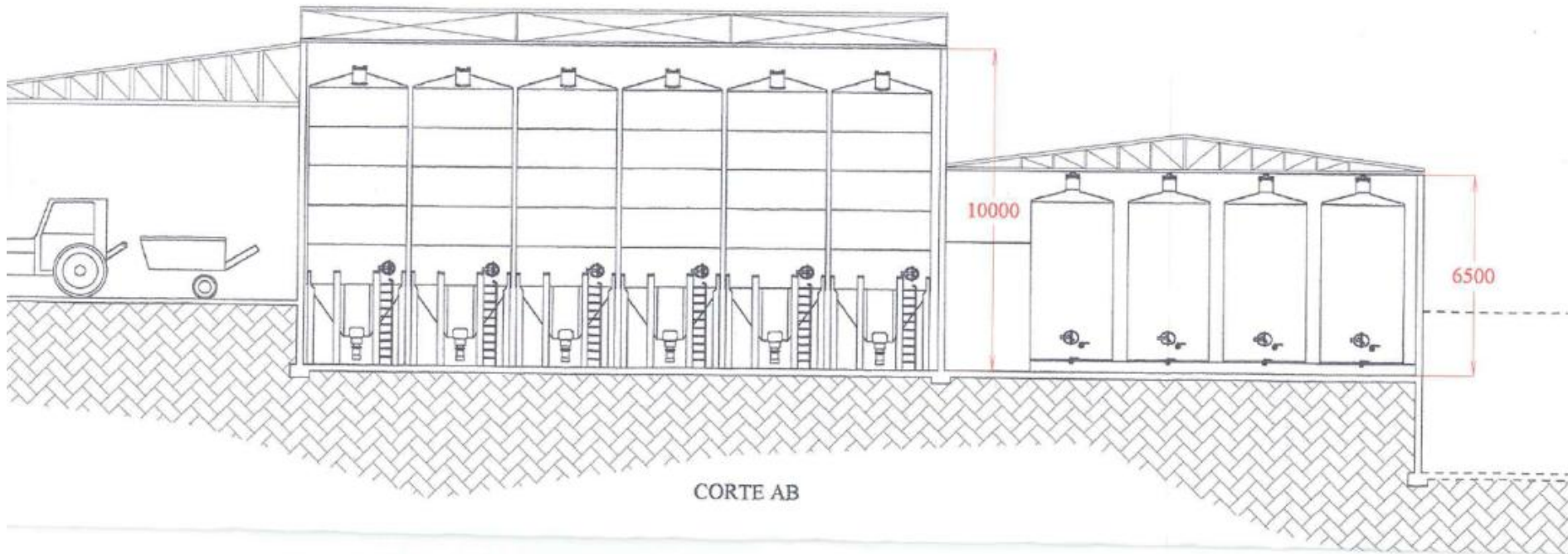




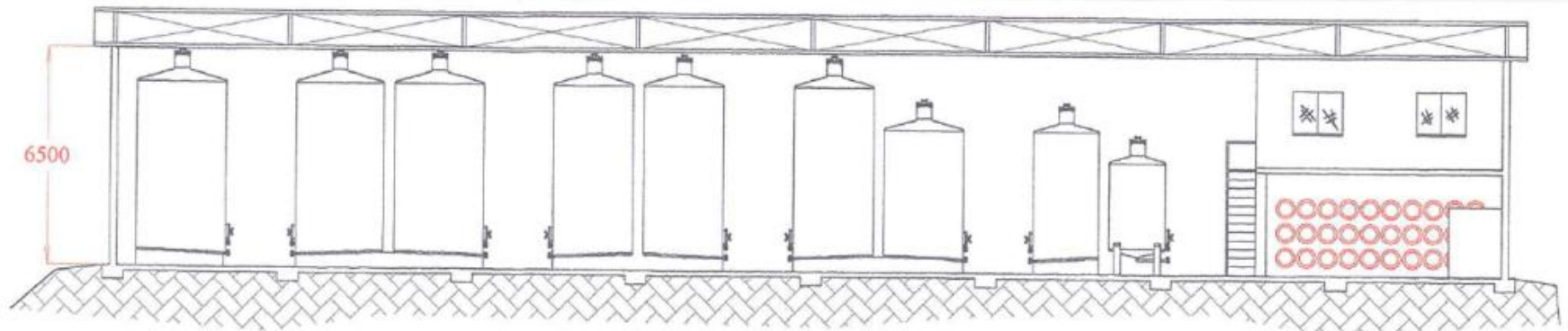
30 m

8 m

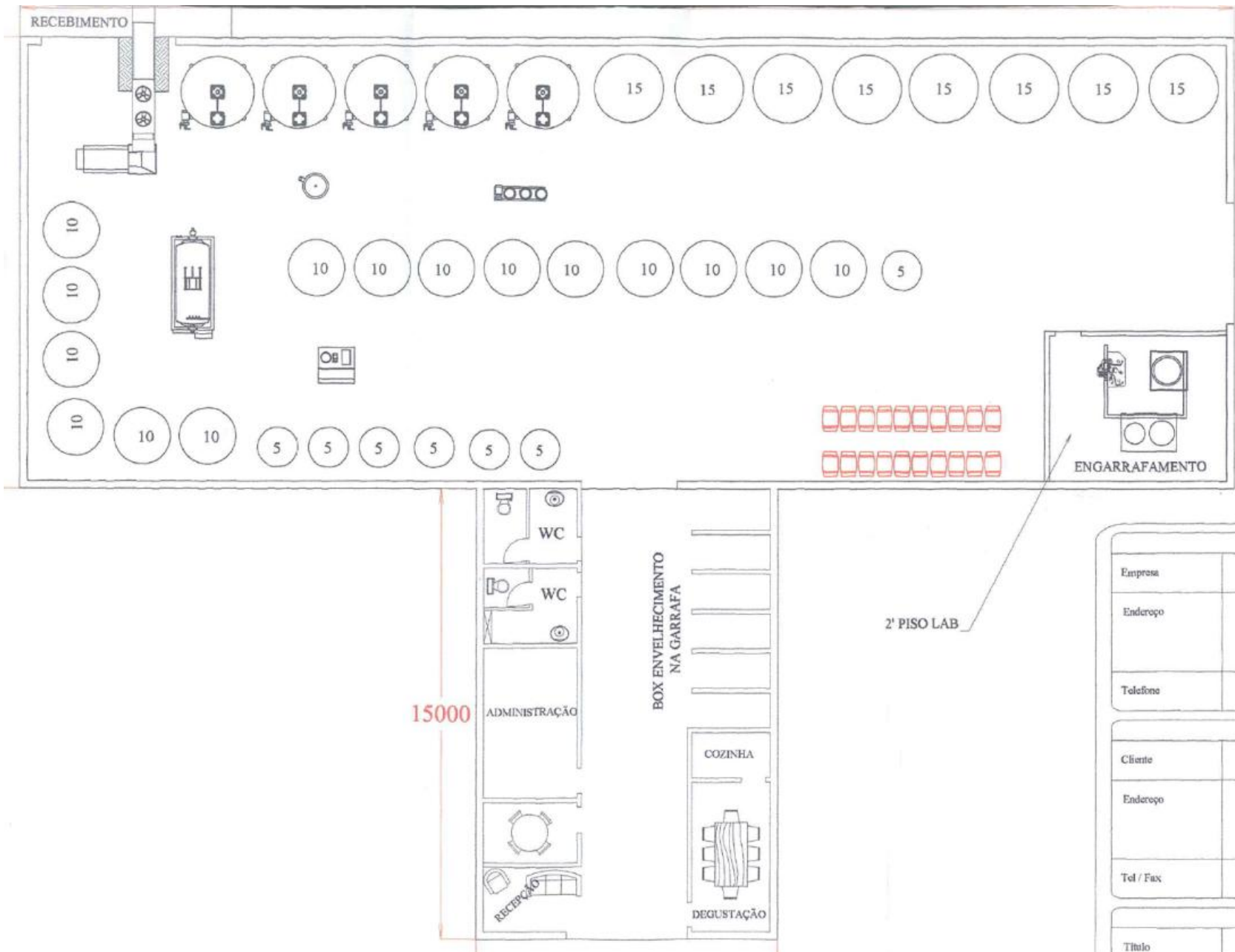




CORTE AB



CORTE CD






ABREU & GARCIA
VINHOS DE ALTITUDE


ABREU & GARCIA
VINHOS DE ALTITUDE















A arte nas barricas







FOUTRE EN CHENE DE L'ALGARVE
OFFERT
PAR L'EMPEREUR NAPOLEON I^{er}
A JEAN REMY MOET,
LORS DE SON PASSAGE A EPERNAY
EN 1810

FOTOS MARCANTES



SAINT-ÉMILION



GRAND CRU CLASSÉ

CHATEAU FONPLÉGADE

SOFISTICAÇÃO NA ADEGA



Passarelas de trabalho











Pisos e canaletas





Laboratório





DOMMERY

FRAN









CHATEAU LATOUR





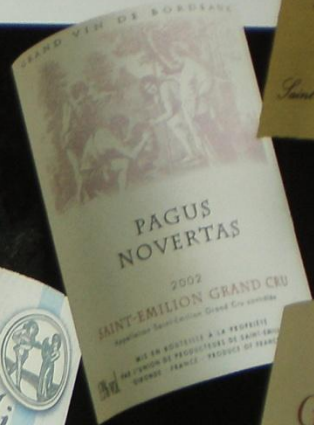






Métier d'Art, Vigneron

JCDecau



POUR VOTRE SAINTE ATTENTION A L'ABUS D'AL COOL

UNION DE PRODUCTEURS DE SAINT-EMILION
www.udpse.com



CHATEAU BLANC











15 May

14

25 1904
2 May

23 1904
11 JH

29 1906
8 JH

5 PY
AN 1908
1

5 PY
AN 1874
1 JH







Jamais
en vain



Toujours
en vin





ROMANÉE
CONTI



- 200
- 198
- 196
- 197
- 196
- 195
- 194
- 193
- 192
- 211



